



# ELEVATE

More than just an engine management program...



*Taking you forward* ↗



# About Us

---

PTB Group Ltd was established in 2001, evolving from a small specialist turbine repair facility based at Brisbane Airport into a global aviation parts and services supply organisation.

As an ASX listed aviation company we provide the following services worldwide:

- Maintenance, repair and overhaul ("MRO") services for turbo prop aircraft engines
- Aircraft and engine leasing
- Aircraft engine and spare parts

Through five operating divisions; Pacific Turbine Brisbane; Pacific Turbine USA; PRIME Turbines; Pacific Turbine Leasing and International Air Parts, we provide specialist services for the Pratt & Whitney PT6A and PT6T series and the Honeywell TPE331 series.

Along with an ability to tear down and sell spare parts for other engine variants, our diversified partnerships have also seen PTB enter new markets, including that of the turboshaft.

A global aviation supplier of parts & services, the PTB Group Ltd has facilities in

## **Australia:**

Brisbane, QLD  
Sydney, NSW

## **United States;**

Butler, PA  
Miami, FL  
Dallas, TX  
Mesa, AZ



# GLOBAL BUSINESS | LOCAL PRESENCE



*Global Support for Your Fleet*

## Table of Contents

---

<b>ELEVATE.....</b>	<b>2</b>
<b>Engine Management.....</b>	<b>3</b>
<b>Program Inclusions.....</b>	<b>4</b>
Scheduled & Unscheduled Maintenance	
Other Inclusions	
<b>Accessories- Engine.....</b>	<b>6</b>
<b>Accessories- Airframe.....</b>	<b>7</b>
<b>Maintenance, Repair &amp; Overhaul.....</b>	<b>8</b>
<b>Field Service.....</b>	<b>9</b>
<b>Leasing Engines &amp; Aircraft.....</b>	<b>10</b>

# ELEVATE

## THE COMPLETE SOLUTION

Are you looking for an end-to-end service program?

With **ELEVATE** you'll be able to secure your maintenance budget with an experienced and dependable team providing complete solutions for your engines and aircraft.

---

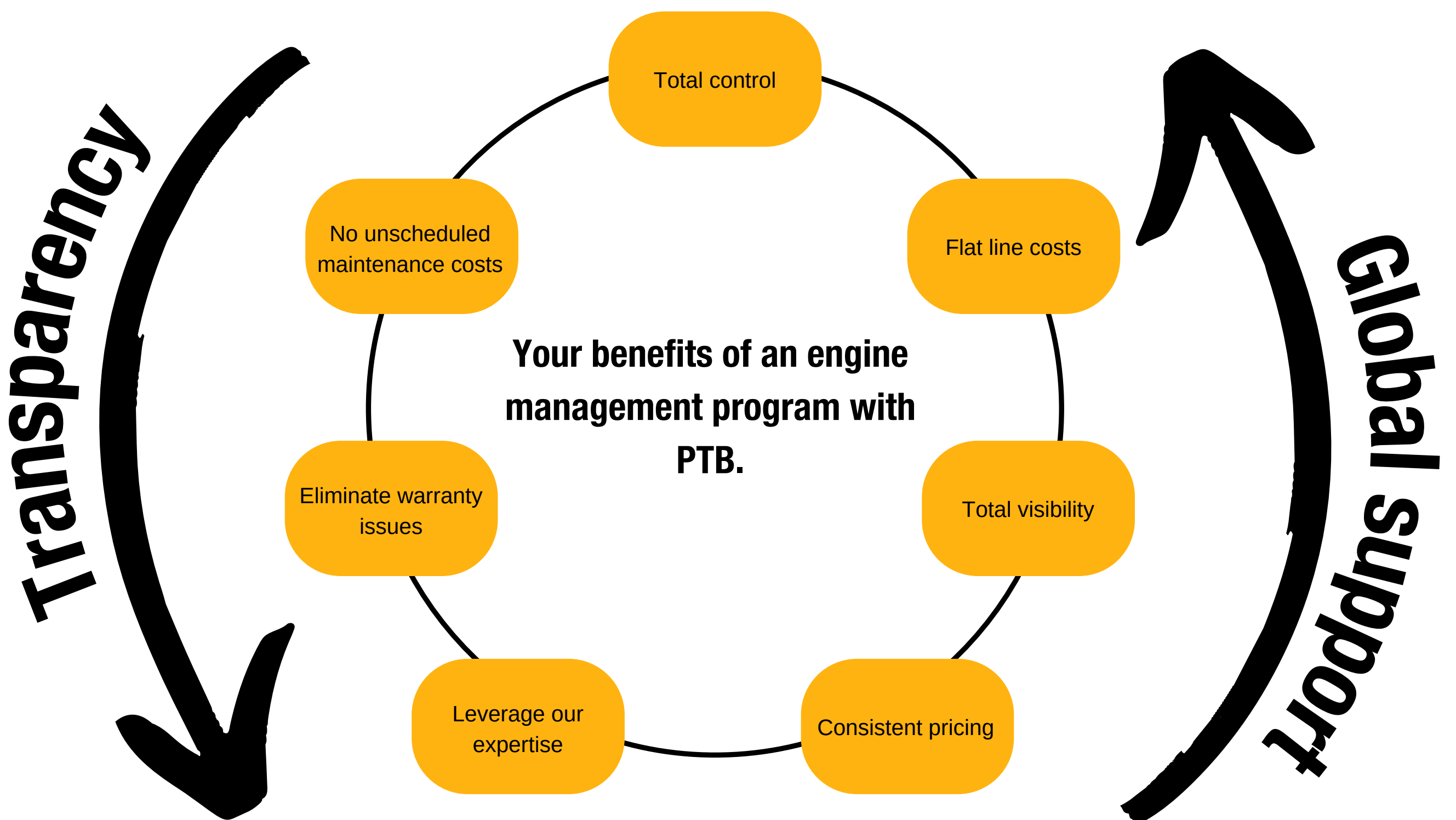
# Engine Management

---

A PTB engine management program offers total engine management support for PT6A, PT6T & TPE331 Series engine operators around the world.

Each engine management program is tailored

specifically to the operator's requirements and operating environment. Managing your maintenance with PTB will incur no surprise engine costs, leaving you with fixed cost engine maintenance.



We work with you to shape the program around your business requirements, to guarantee you have peace of mind knowing you will no longer have warranty battles or rental engine costs to worry about. Be assured that there are no expensive buy-ins to our programs.

You will have access to our technical support personnel, seamless logistics operations and the continued support of Pacific Turbine Brisbane's extensive turbine engine expertise.

With a global network, we can provide you support with our programs no matter where you are located.

# Inclusions

---

Program coverage for scheduled and unscheduled maintenance items including engine workshop labour.

## Scheduled

Items	Labour	Parts
Overhaul	Yes	Yes
Hot Section Inspection	Yes	Yes
Fuel Nozzles	Yes PT6 / Optional (TPE331)	
Life Limited Parts	Yes	Yes
AD's & SB's	Yes	Yes <sup>(1)</sup>
Replacement Engines	Yes	Yes
Engine Removal	Yes	Yes

## Unscheduled

Items	Labour	Parts
Basic Unscheduled Engine Removal (BUER)	Yes	Yes
AOG	Yes	Yes
Travel Cost	No	N/A
Replacement Engines <sup>(2)</sup>	N/A	Yes
Engine Removal	No	No

(1) PTB covers all AD's and SB's parts up to \$5000 with the owner covering the balance, if any. Additional coverage can be requested according to your requirements.

(2) Replacement engines for unscheduled events are to be negotiated on a case by case basis with some operators having spare engines on site or stored at a PTB facility. Replacement engines will be shipped to your location within 7 days of us receiving notification of an unscheduled engine removal. There are many other options to reduce the downtime in the event of an unscheduled removal, including the provision of a spare engine on your site, in storage at PTB and more. We can tailor a solution to your operation.



# Inclusions continued...

---

## Warranty

---

The PTB engine management program will ensure coverage for the the engine for the duration of its enrolment in the PTB Program. Engines in our program are covered for all eventualities\*.

\*Excluding insurable events and operator negligence

## Replacement Engines

---

All PTB **ELEVATE** customers receive a replacement engine before off-wing scheduled maintenance begins. Dependent on your needs and the level of coverage required, PTB can provide a replacement engine within 7 days of AOG or have a dedicated spare in our PTB store facility or on-site with you.

## Shipping

---

Each **ELEVATE** contract is individually tailored to meet your operational and commercial requirements. Typically we offer one way included shipping, however we can include return shipping as an option, or can ship all items on your account.

# Accessories- Engine

---

Accessories can include the following  
(for full lists please contact our team):

## PT6 Engine Accessories

FCU	Overspeed Governor
Prop Governor	Bleed Valve
Fuel Pump	Hot Section
Oil Fuel Heater	Bus Bar
Ignition Exciter	Harness
Fuel Nozzle Kit	T5 Probes
Fuel Nozzles & Sheaths	LED
Start Flow Control	Combing Gearbox (PT6T only)

## TPE331 Engine Accessories

Accessory Gear Assembly	Fuel Shutoff Valve
Feathering Valve	NTS Valve Housing
Fuel Control Assembly	Oil Pressure Pump
Fuel Flow Divider Valve	Torque & Temperature Limiter Controller
Fuel Heater Assembly	Solenoid Shutoff Valve (Oil Vent Valve)
Fuel Pump Assembly	Oil Scavenge Pump (Turbine)
Fuel Nozzle Assembly	Oil Scavenge Pump (Gearcase)
Fuel Regulator Assembly	Oil Pressure Regulating Valve

With various warehouses and established relationships  
with suppliers, PTB also has a range of stock for;

RR250	Bell Helicopters
Arriel 1 & 2	MD Helicopters
EC130/135	Airbus A350/355
PT6D	

among various others engine and aircraft types.

Proudly partnered to deliver excellent quality with





# Accessories- Airframe

---

With our global distribution stores, we stock a multitude of components fitted to a wide variety of aircraft including but not limited to Boeing 737, Airbus A320, DHC8 and ATR, for sale or exchange. At competitive pricing and with fast turnaround we'll have you skybound quicker with parts including:

**Propellers**

**Landing Gears**

**Fire Bottles**

**Fire Extinguishers**

**Life Jackets**

**Starter Generators**

**Life Rafts**

**Tools**

**Oils & Lubricants**

**Cockpit Voice Recorders**

**Lighting Components**

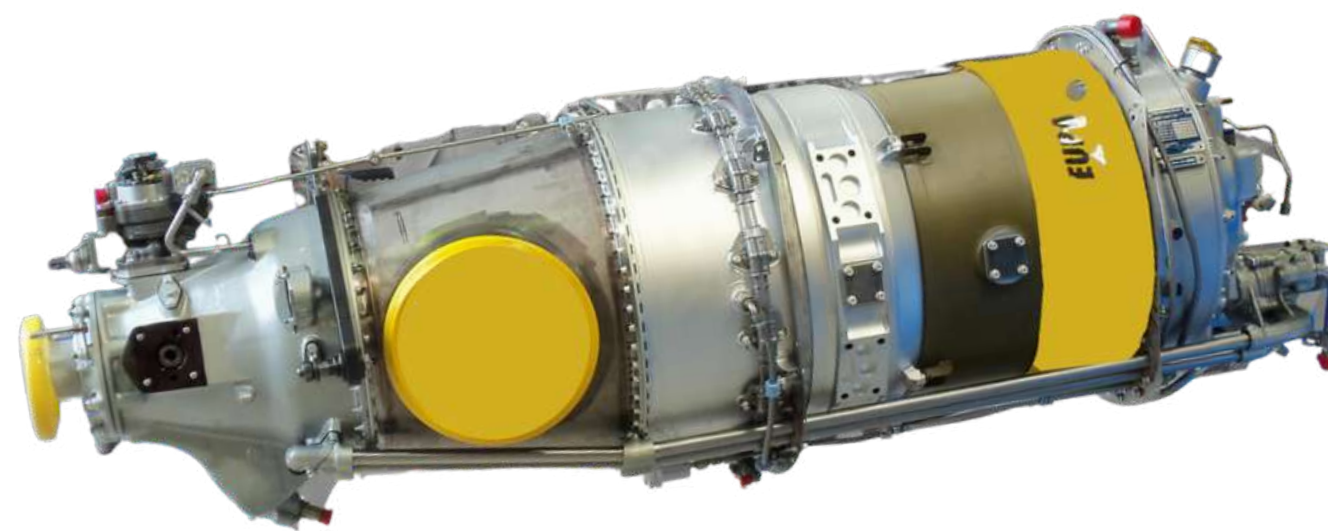
**Tyres**

**AND MORE AVAILABLE**

Contact our sales teams at [sales@pacificturbine.com.au](mailto:sales@pacificturbine.com.au) or [sales@iapgroup.com](mailto:sales@iapgroup.com) to see what we can do for you and your aircraft.



Specialising in Pratt & Whitney PT6A and Honeywell TPE331 engines, the workshop at Pacific Turbine Brisbane has an expert team dedicated to ensuring the best performance of your aircraft.



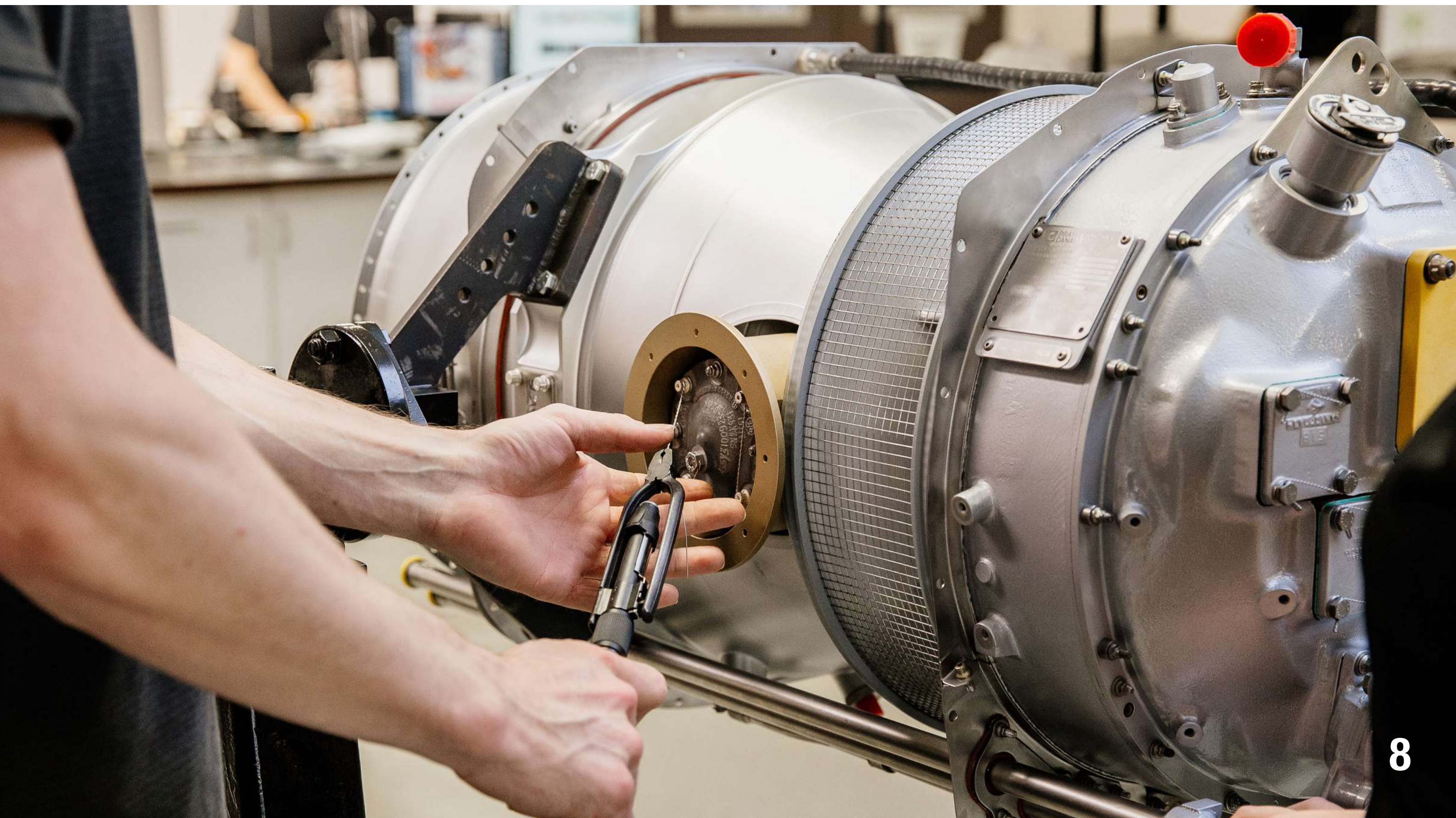
The core capabilities and services provided by the workshop include;

- Over 10,000 line items (new, serviceable, exchange) stocked at our warehouse
- Parts restoration
- Pre-purchase inspections available
- MIO Inspection & Repair
- FOD Inspection & Repair
- Troubleshooting, borescope inspections, technical support
- Special alloy welding
- Balancing equipment
- PT6 Test Cell

With the team at Pacific Turbine Brisbane you'll get access to AOG support and a mobile repair team if needed for a quick turn around. Additionally, lease, rental & exchange engines are available to help you get back in the air quicker.

# Maintenance, Repair & Overhaul

---



# Field Service

---

Fly further with our mobile response team.

With PTB you'll get an extended range of services through our field service team allowing for greater flexibility and helping to minimise down time.

With the highest level of expertise, you'll have a dependable team ready to travel to you.

Mobile response capabilities include:

- Off-wing hot section inspection;
- Power section repair;
- Borescope inspection;
- Engine assessment;
- Troubleshooting;
- Pre-purchase inspection;
- FOD repairs and #1 compressor blade blending;
- Minor repairs including T5 harness replacement;
- Fuel nozzles replacement;
- Accessory changes and;
- Engine certification.



**Matt Wearne**

**PT6 Field Service Manager**

## **AOG Assistance**

If you are in urgent need of assistance please contact PTB on +61 7 3637 7000 and you will be directed to our AOG support team.



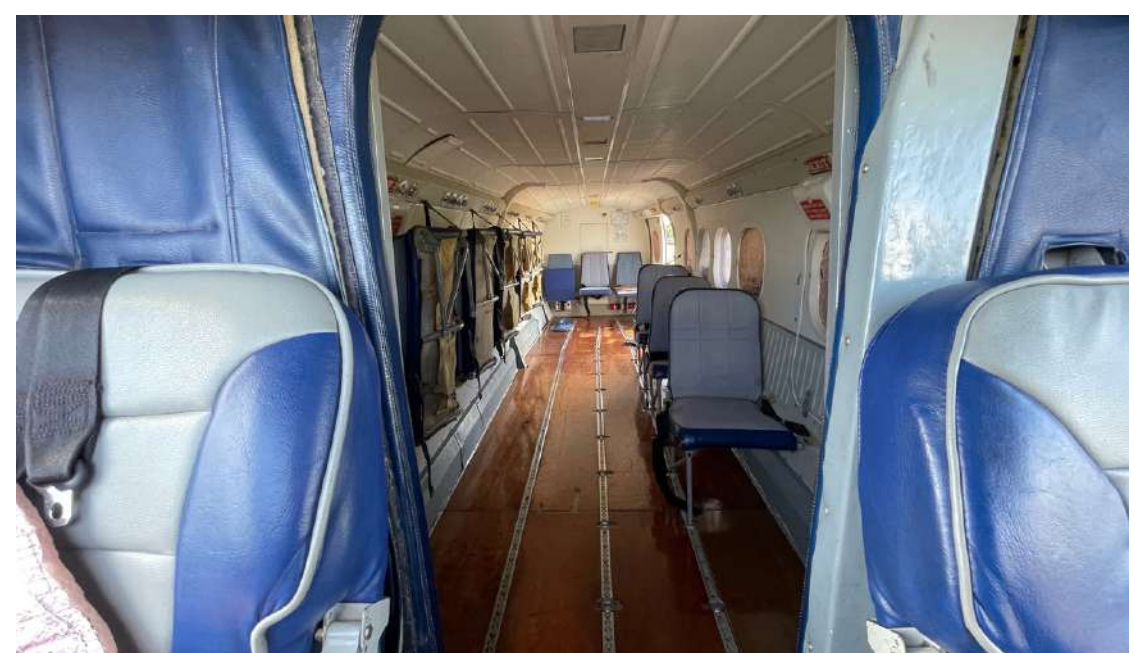
# Leasing- Aircraft & Engines

---

Pacific Turbine Leasing is a dedicated aircraft and engine lessor. With decades of experience maintaining, overhauling and leasing PT6 and TPE331 engines, PTL can leverage this experience to provide turnkey aircraft and engine leasing solutions.



We are known for our flexible engine management programs and our customer centric focus is built into all that we do in the PTB Group, including engine and aircraft leasing. With many happy aircraft leasing customers in Asia, the Pacific and throughout Australia we have the experience and technical understanding to help your business take off.



PTL has the flexibility to tailor a solution to suit your needs, from short term engine rentals to long term aircraft operating leases and everything in between.



# A team for you!



When you enter an engine management program with Pacific Turbine Brisbane you become a valued member of the PTB community. As such we will ensure you have access to a full time support team who are specifically dedicated to our program customers. This team of exceptional and experienced staff who have diverse backgrounds both within and outside of aviation will be focused on delivering the best outcomes for you and your business.

**Ryan Sullivan**

**Leasing Manager**

ryansullivan@ptleasing.com  
+61 404 617 680



**Alice Scott**

**Contracts Manager**

ascott@pacificturbine.com.au  
+61 478 202 676



**Lisa Macey**

**Customer Service Manager**

lmacey@pacificturbine.com.au  
+61 412 922 001



**Heath Adams**

**BDM**

hadams@pacificturbine.com.au  
+61 402 526 338



**Matt Wearne**

**Field Service Manager**

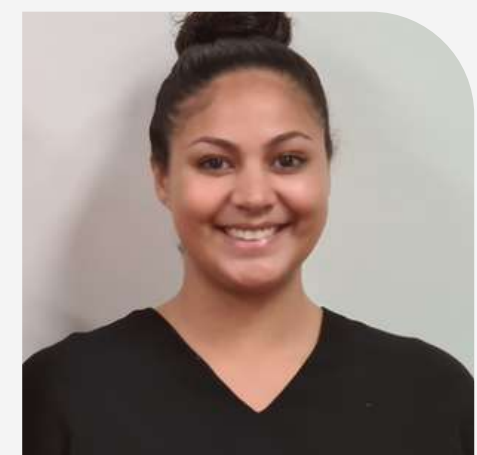
mwearne@pacificturbine.com.au  
+61 478 202 552



**Marissa Pittar**

**Account Manager**

mpittar@pacificturbine.com.au  
+61 468 346 132





---

**ELEVATE**

*Taking you forward* ↗

 **PTB GROUP LTD**

**PACIFIC TURBINE** BRISBANE | LEASING | USA **INTERNATIONAL AIR PARTS**  **PRIME TURBINES**